



WOOD WALLS WITH *Real* CHARACTER

## SPEC DATA SHEET

### SECTION A - General Product Information

**Product Name:** AS-IS BRAND Wood Walls

**Suppliers:**

**CANADA**

InStone Products

[www.instoneproducts.ca](http://www.instoneproducts.ca)

**US**

Border Products

[www.borderproducts.net](http://www.borderproducts.net)

### Product Description:

Every piece of AS-IS BRAND Wood Walls has been carefully handcrafted to capture the look and feel of real barn wood. All wood has been carefully chosen from sustainably harvested sources.

The wood is treated by a unique proprietary process that captures the unique character of reclaimed aged barn wood. All wood is then carefully milled to exact measurements to ensure a precise board for fast and easy installation.

AS-IS is proud to use materials, manufacturing, and packaging that have positive social & environmental impacts. Everything is done in North America, but our positive impact is global. [www.as-isbrand.com/trees](http://www.as-isbrand.com/trees)

### Limitations:

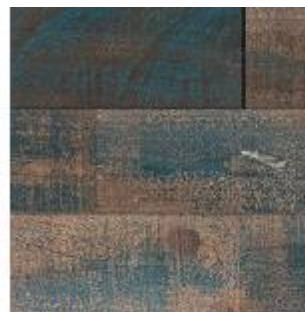
AS-IS BRAND products do not add to the structural load bearing capacity of the substrate to which it is being applied. All products have been designed for wall and ceiling installation only, and should not be applied anywhere that they will be walked or sat on.



BLACK-ISH



WHITE-ISH



BLUE-ISH



GREY-ISH



RAW-ISH



RED-ISH



BROWN-ISH



UMBER-ISH



Installation Instructions are available at [www.as-isbrand.com](http://www.as-isbrand.com)

## SECTION B – Product Specifications

### DIMENSIONS AND WEIGHT

Product	Dimensions			Wt.	Box		Pallet	
'ish' Collection	Lengths (in)	Width (in)	Thickness (in)	(48" pc) (lbs)	Sq Ft / box	Total lbs (approx.)	Boxes / pallet	Total lbs (approx.)
RAW-ISH	12 - 48	5	1/4	1	20	13	84	1150
BLACK-ISH	12 - 48	5	1/4	1	20	13	84	1150
BLUE-ISH	12 - 48	5	1/4	1	20	13	84	1150
GREY-ISH	12 - 48	5	1/4	1	20	13	84	1150
RED-ISH	12 - 48	5	1/4	1	20	13	84	1150
WHITE-ISH	12 - 48	5	1/4	1	20	13	84	1150
BROWN-ISH	12 - 48	5	1/4	1	20	13	84	1150
UMBER-ISH	12 - 48	5	1/4	1	20	13	84	1150

### COVERAGE

Product (approx. pc size)	sq.ft / 12" pc	sq.ft / 24" pc	sq.ft / 36" pc	sq.ft / 48" pc	Approx. sq.ft / Box	Approx. sq.ft / Pallet
'ish' BOARDS	0.42	0.84	1.25	1.67	20 sq.ft	1680 sq.ft (84 boxes)

### STANDARD BOX and PALLET Dimensions

#### 'ish' BOX

Box Dimensions = 50" L x 5 ½"W x 3" H.

Box Weight = approx. 12 lbs.

#### 'ish' CASE (4 BOXES)

Box Dimensions = 50 L" x 11 ¾ W" x 8 H".

Box Weight = approx. 50 lbs.

#### 'ish' PALLET

Pallet Dimension = 40" x 48" x 53"

Pallet = 84 boxes

Pallet Weight = approx. 1040 lbs.

**(Pallets can be stacked 2 high for shipping. Pallets also come 120 boxes/ pallet)**

### Recommended Finishing Products

The following products are all recommended with AS-IS BRAND products. See installation instructions for details on how and when to use.

- Polyurethane Construction Adhesive (DO NOT USE water/latex-based adhesive)
  - Approx. (1) 10.3oz tube / box. (using ¼" bead over ¾ of the length of the board)
- 1" Air-Powered Nail (Brad nail) if air (pneumatic) nail gun is being used
- 1" Finishing Nail if hammer is being used
- Heavy-Duty 2-Sided tape for a temporary installation

## SECTION C – Technical Data

The types of wood used may vary somewhat based on availability of responsibly harvested lumber.

- Kiln-dried Sugar Pine Wood
- Finish = distressing and weathering process combined with paint finish

## SECTION D – Installation

Installation Instructions are available at [www.as-isbrand.com](http://www.as-isbrand.com)

## SECTION E – Warranty

Warranty information is available at [www.as-isbrand.com](http://www.as-isbrand.com)

**AVAILABLE WITH A 'CLASS A FIRE-RATED / SMOKE RATED' FINISH. SPECIAL ORDER.**

Installation Instructions are available at [www.as-isbrand.com](http://www.as-isbrand.com)